

WASING

1759

FROUDS BRIDGE MARINA

Hobbyhorse

57' Cruiser Stern

Hull = Northwich Boats, Fitout L Palfrey

£44,950ono



Hobbyhorse is 57' cruiser stern with a rare 4 +2 berth layout. This vessel has versatility written all over it, with 2 toilet large galley and big saloon, coming in board you would not think this boat is only 57'.

Hobbyhorse – 57' Cruiser Stern

Boat Specification

Year of Construction	2005
Hull Plating Specification	Steel 10/6/4
Keel	Flat
No. Berths	4+2

History of Vessel / Maintenance

Boat Safety Certificate Expiry	Not known
Recent Survey	2024
Latest Hull blacking	2024
Anodes	2024

Boat Description

Lovingly owned for many years, by the owner and boat fitter, Hobbyhorse has been used extensively by the family over the years. With family growing and moving on its time now for Hobbyhorse to find a new owner who will love and care for her as the previous owner. Fitted with everything you need for a comfortable extended cruise Hobbyhorse is ready for its next adventure.

The Boat – Practical & Full of Promise:

- **Hull :** 57ft steel narrowboat, built by Northwich boats (2005)
- **Engine:** Beta marine 42hp
- **Layout:**
 - **Forward Saloon:** Bright space with a multifuel stove, plenty of space for seating/eating as well as doubling up as another 2 berths.
 - **Galley:** Centrally located with Free standing LPG double oven, 12v shoreline fridge, water filter, 40mm solid oak worktops, bags of storage and good natural light via 2 large side windows

Hobbyhorse – 57' Cruiser Stern

- **Bedroom 1:** Extendable double bed giving you the comfort of a true double with some storage underneath
- **Bathroom:** Large shower unit, vanity unit with ceramic sink and a pump out toilet with large holding tank
- **Aft Cabin:** Cleaver 2 x offset single beds allowing space for a small W/C and handbasin at the rear. Storage under the beds give you plenty of space to keep your bits and pieces.
- **Electrical:** 1800W inverter, and a set of domestic & starter batteries
- **Extras:** Webasto diesel heater, Calorifier with immersion, fuel and water gauges

Engine Specification

Engine Make	Beta Marine
Engine Hours	Not Known
Bow Thruster	No
Diesel Tank Capacity	175
Additional Systems	

Water & Heating Systems

Source of Hot Water	Calorifier, Webasto
Central Heating	Webasto
Solid Fuel Stove	Multifuel stove
Water Tank Capacity	Not recorded
Water Tank Material	Stainless steel
Water Pump	

Electrical System and Components

12-Volt System/Lighting	Standard
12-Volt System/Power	Standard

Hobbyhorse – 57' Cruiser Stern

240 Volt	Shorepower
Inverter	1800w
Solar Panel	No
Batteries	3 x 12vv domestic, 1 starter
Other systems	

Bathroom Specification

Type of Toilet	Pump Out
Shower/Bath	Cubicle
Handbasin	Vanity unit with ceramic sink
Additional Information	

Kitchen Specification

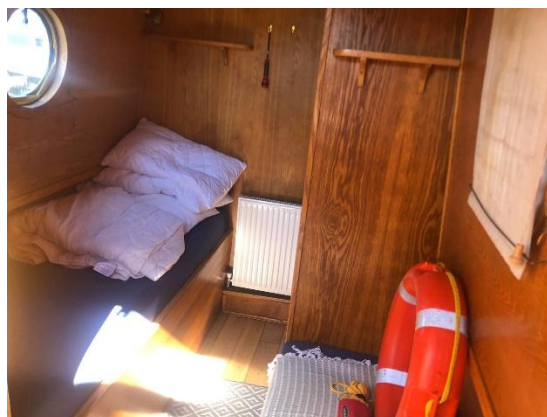
Cooker	Freestanding double LPG oven
Hob	Integrated into oven
Fridge	12v Fridge
Gas	2 x 13kg
Additional Systems	

Hobbyhorse - 57' Cruiser Stern

Additional Photos



▲ Bedroom 2 facing fore



▲ Bedroom 2 facing fore



▲ Rear toilet



▲ Rear bedroom facing aft

Hobbyhorse - 57' Cruiser Stern



▲ Main toilet



▲ Shower



Main Bedroom facing aft



Galley facing fore

Hobbyhorse - 57' Cruiser Stern



Galley facing aft



Saloon facing fore



Saloon facing aft



Multifuel stove

NOTE:

In this transaction we are acting as Brokers only. Whilst every care has been taken in their preparation, the correctness of these particulars is not guaranteed. The particulars are intended only as a guide and they do not constitute a term of any contract. A prospective buyer is strongly advised to check the particulars and where appropriate to have the vessel fully surveyed and inspected, water trialled and opened up".