



FROUDS BRIDGE
M A R I N A

Water Impulse

68' Semi Trad

6+2 berth

Hull - Delta Marine 1998

Re-fit C&K Narrowboats 2008

£47,000ono



Water Impulse is a 68ft narrowboat which was refitted in 2008 by C&K Narrowboats. This vessel has a highly flexible layout with room to sleeps 6+2, plenty of seating and 2 toilets. Not to mention that Water Impulse has a hydraulic drive including bow and stern thrusters meaning she can be turned on a sixpence. A great vessel for exploring the waterways.



Boat Specification

Year of Construction	Hull - 1994 Refitted 2008
Hull Plating Specification	15/6/6
Keel	Flat
No. Berths	6+2

History of Vessel / Maintenance

Boat Safety Certificate Expiry	July 2024
Recent Survey	N/A
Latest Hull blacking	Nov 2021
Anodes	Nov 2021

Boat Description

Water Impulse is a 68ft narrowboat which was refitted in 2008 by C&K Narrowboats. Stepping down from the large well deck into the forward saloon you will notice the large bright space with a u shaped 6 seater settee with plenty of storage under. The settee also converts into either a double bed or dinette with the fold away table. The saloon also boasts an under gunwales cupboard, radio and 22" TV.

Moving aft you step into the walk through galley with black granite effect laminate worktops and stainless steel sink. Plenty of storage for you pots and pans can be found here with cupboards, drawers, wall shelves and the important wine rack. The galley also houses the LPG oven/grill, 4 burner hob, 12v fridge and the microwave oven.

Further aft again you come to the double bunk space with the fitted ladder. Here you will find two good sized beds, a full height storage cupboard and also find the Alde gas boiler.

Next is the large double bed space. This space has the luxury of port and starboard hatches as well as a skylight. The space also brings a good sized cupboard as well as recessed head paces shelves.

The next step is a toilet room accessed via a sliding door with the first of the two pump out toilets. Herer you will also find a wall basin, mirror and shaving point

The room next door, again accessed via a sliding door, is the second toilet and shower room. A good sized shower cubicle sits in the space alongside small wall basin, towel rail and wall mirror.



Water Impulse - 68' Semi Trad

The final large space is the aft saloon which has is a flexible space lending itself nicely to either bench seating, dining space or the last of the 2 bunk berths. As with the rest of the boat you will find ample storage in the way of half height cupboard and shelves plus the counter cupboard. Finally you have the two large windows and skylight making this space a delight to be in.

Next is the engine room where you will find the engine, hydraulic system, calorifier, inverter, batteries etc. This space has a deep sliding hatch giving you that semi trad feel and comfortable cruising experience.

Engine Specification

Engine Make	Perkins 4 cylinder
Engine Hours	Not Recorded
Bow Thruster	Hydraulic Bow and Stern thrusters
Diesel Tank Capacity	227l
Additional Systems	

Water & Heating Systems

Source of Hot Water	Alde Gas Boiler, Calorifier + Immersion
Central Heating	Alde 2928
Solid Fuel Stove	N/A
Water Tank Capacity	680l
Water Tank Material	Stainless Steel
Water Accessories	

Electrical System and Components

12-Volt System/Lighting	Standard + LED lights
12-Volt System/Power	Standard
240 Volt	Shorepower
Inverter	3kW
Solar Panel	N/A
Batteries	4 x domestic, 1 x starter
Other systems	50A charger



Bathroom Specification

Type of Toilet	2 sealand pump out
Shower/Bath	Shower cubicle
Handbasin	2 x sink
Additional Information	Towel Rail

Kitchen Specification

Cooker	New world LPG oven
Hob	4 x burner hob
Fridge	12v fridge
Gas	2 x 13kg
Additional Systems	microwave



Additional Photos



▲ Saloon facing aft



▲ Saloon facing fore



▲ Galley facing aft



▲ Saloon facing fore



Water Impulse - 68' Semi Trad



▲ Bunk Room facing aft



▲ Bunk room facing fore



▲ Bedroom facing aft



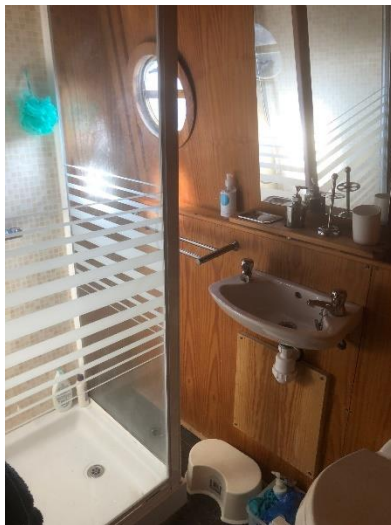
▲ Bedroom facing fore



▲ Switches and gauges



▲ Toilet no 1



▲ Toilet No 2 + Shower room

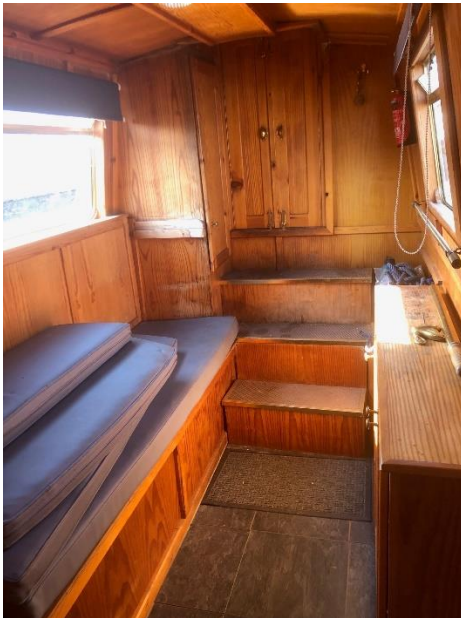


▲ Toilet No 2 + Shower room

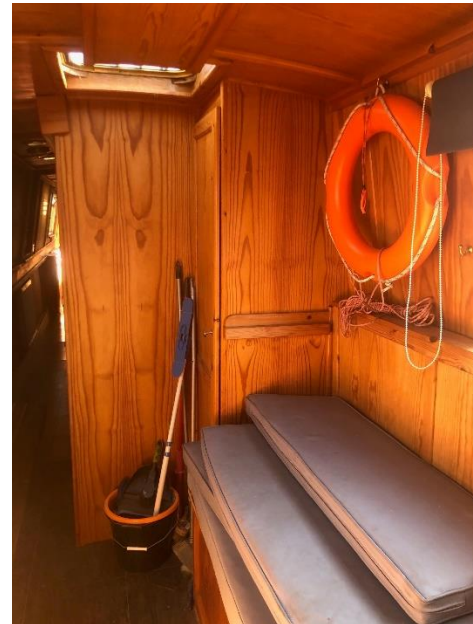


FROUDS BRIDGE
MARINA

Water Impulse - 68' Semi Trad



▲ Aft Saloon facing aft



▲ Aft Saloon facing fore



NOTE:

In this transaction we are acting as Brokers only. We are informed that this sale is not related to the Owner's business, trade or profession. Whilst every care has been taken in their preparation, the correctness of these particulars is not guaranteed. The particulars are intended only as a guide and they do not constitute a term of any contract. A prospective buyer is strongly advised to check the particulars and where appropriate to have the vessel fully surveyed and inspected, water trialled and opened up".



FROUDS BRIDGE
MARINA

Water Impulse - 68' Semi Trad
