



FROUDS BRIDGE
M A R I N A

Willow

40' Traditional Stern

CRT Index - TBC

£19,950 ono



Willow is a quaint 40' Traditional Stern Springer reported to of been built in 1995. This boat is small and compact and would make a nice little boat for cruising or living board. Inside had bags of old school charm and in good sound order. Willow as you would expect for an 80's Springer is fitted with a Lister engine.



Boat Specification

Hull Plating Specification	Thought to be 6/5/3mm
Keel	V
No. Berths	2
Seating	Sofa bed
Flooring/Layout	Saloon at Bow

History of Vessel / Maintenance

Boat Safety Certificate	2024
Recent Survey	Aug 2020
Latest Hull blacking	Aug 2020
Anodes	Aug 2020

Boat Layout Description

Externally - Willows external paintwork has previously been taken back and finished a grey primer. There are no significant rust spots but Willow will need painting. The external covers are in good working order.

General Internal - The cabin are well maintained and recently refurbished with a light birght pine T&G cladding giving a warm finish throughout. There are no signs of water ingress with all fixtures and fittings in good working order.

Engine Room- At the stern Willow is powered by a Lister diesel engine which has been well maintained throughout its life.. The bilge is very clean and tidy with no signs of major oil issues or water intake. The room itself is compact but with clever removable engine surrounds maintenance is a breeze.

Bathroom - Stepping down into the cabin the bathroom is immediately on the port side giving you a shower space with shower curtain, a small sink unit and space for a Porta Potti type toilet.

Galley - The galley is small and compact but open plan natures gives a real sense of space considering the size of the vessel. There is a Flavel LPG half sized cooker, a 3 way fridge, Paloma boiler, stainless steel sink and adequate storage. Here you will find, as you do throughout the boat, little cupboards/shelves to store away the little bits and pieces you need to have on board.

Saloon - Again this is a decent space with room for a small fold up table and a large 2 berth sofa bed. The saloon also has cupboard space portside and multi fuel stove starboard. The open cabin gives a warm cosy feeling and nice space to spend some relaxing time within.



Engine Specification

Engine Make	Lister Diesel
Engine Hours	Not reported
No of Cylinders	
Gearbox Make/Type	PRM
Bow Thruster	No
Diesel Tank Capacity	Not reported estimated at 150 litres
Propeller	Not recorded

Water & Heating Systems

Source of Hot Water	Paloma
Central Heating	None
Solid Fuel Stove	Solid fuel stove
Water Tank Capacity	Not reported
Water Tank Material	Integral
Additional Systems	Non reported



Electrical System and Components

12-Volt System/Lighting	Standard
12-Volt System/Power	Standard
240 Volt	Shorepower
Inverter	1kW
Solar Panel	Yes
Batteries	3 x domestic 1 x starter
Galvanic Isolator	Not reported

Bathroom Specification

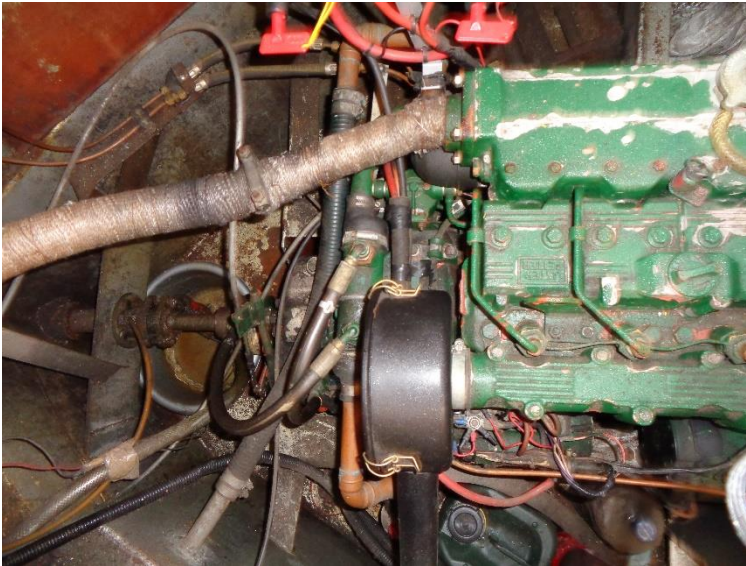
Type of Toilet	Porta Potti
Shower/Bath	Yes
Handbasin	Yes
Additional Systems	Sink unit

Kitchen Specification

Cooker	Flavel Vanessa cooker
Fridge	Dometic 3 way
Gas	2 x 13kg gas bottles in stern locker
Additional Systems	None



Additional Photos



▲ Lister Diesel Engine



▲ Shower room



▲ Galley facing fore



▲ Galley facing aft



FROUDS BRIDGE
MARINA

Willow - 40' Traditional Stern



▲ Saloon to Bow doors



▲ Saloon facing aft





Willow - 40' Traditional Stern



NOTE:

This is sales information, and not a survey report. The details in this brochure are based on superficial inspection; and on information provided to Frouds Bridge Marina via the owner. They are intended for you to decide whether to investigate the boat further. The information here is given in good faith but no description, statement, promise of work to be done, or suggestion for future use, constitutes an offer.