



FROUDS BRIDGE  
M A R I N A

---

## Nuthatch

41' Traditional Stern Narrowboat

Brummagem Boats 'Brumtug'



£29,950 ono

Nuthatch, formerly known as 'Beaver', is a traditional stern narrowboat commissioned in 1990 by Brummagem Boats she is a beautiful 40' 'Brumtug', which was a class of short boats built by the company in the 1980s through the 1990s built in limited numbers. With a traditional layout, this cabin style provided a home to countless canal families in times gone by, but with a twist of perfecting the layout over time. Nuthatch is a charming and quirky little boat which would benefit from some TLC in the cabin and maybe reworking a little to make it your own.



## Boat Specification

|                            |       |
|----------------------------|-------|
| Year of Construction       | 1990  |
| Hull Plating Specification | Steel |
| Keel                       | Flat  |
| No. Berths                 | 2 + 1 |

## History of Vessel / Maintenance

|                         |               |
|-------------------------|---------------|
| Boat Safety Certificate | November 2024 |
| Recent Survey           | July 2019     |
| Latest Hull blacking    | 2022          |
| Anodes                  | 2022          |

## Boat Description

The hull of the boat was built by Brummagen as a 'Brumtug' class narrowboat in 1990. Being one of a limited build, possibly 15, she was commissioned as a 32' narrowboat and lengthened to 41' in 1999 by Adelaide Marine at Southall. This included modifications to the steelwork, fitting new windows, ballast and flooring.

"Nuthatch" benefits from having an extra-large and deep forward deck area, due to the lengthening, and within this area is additional steel storage lockers that double as seating for those long warm summer evenings. The forward deck is covered with a PVC cover that can roll up when cruising.

The forward cabin is the extended part of the boat, this was professionally added in 1999 by Adelaide Marine at Southall giving the boat an additional 9ft 6in and providing a dinette that converts to a double bed and a second wash basin and storage.

The galley is well sized and practically designed for this size of narrowboat. This well-equipped space includes a sink and separate draining board, a gas hob above a grill and oven and useful 12v under counter fridge.

The bathroom is fitted out as a wet room which has a full shower compartment and ablutions in the form of a pump out toilet system.

A lovely feature of this small boat is the traditional style Boatman's rear cabin which is complemented with a 'boatman' wood burning stove, drop down double bed and foldaway table. The cabin has an abundance of storage for all those essentials for life on the cut.

In 2019 "Nuthatch" had a full re-engine and a new Thornycroft T-20 engine and control panel. This engine is a raw water-cooled engine using canal water for cooling.



## Engine Specification

|                      |                       |
|----------------------|-----------------------|
| Engine Make          | Thorncroft Marine T20 |
| Engine Hours         | Not reported          |
| Bow Thruster         | No                    |
| Diesel Tank Capacity | 100 (estimated)       |
| Additional Systems   | N/A                   |

## Water & Heating Systems

|                     |   |
|---------------------|---|
| Source of Hot Water | Eberspacer D4WSC Calorifier Coil        |
| Central Heating     | Eberspacer D4WSC Central Heating Boiler |
| Solid Fuel Stove    | Yes                                     |
| Water Tank Capacity | Not Reported                            |
| Water Tank Material | Not Reported                            |

## Electrical System and Components

|                         |                       |
|-------------------------|-----------------------|
| 12-Volt System/Lighting | Standard              |
| 12-Volt System/Power    | Standard              |
| 240 Volt                | Shorepower            |
| Inverter                |                       |
| Solar Panel             | Yes                   |
| Batteries               | 1 Starter + 1 Leisure |
| Other systems           | N/A                   |



## Bathroom Specification

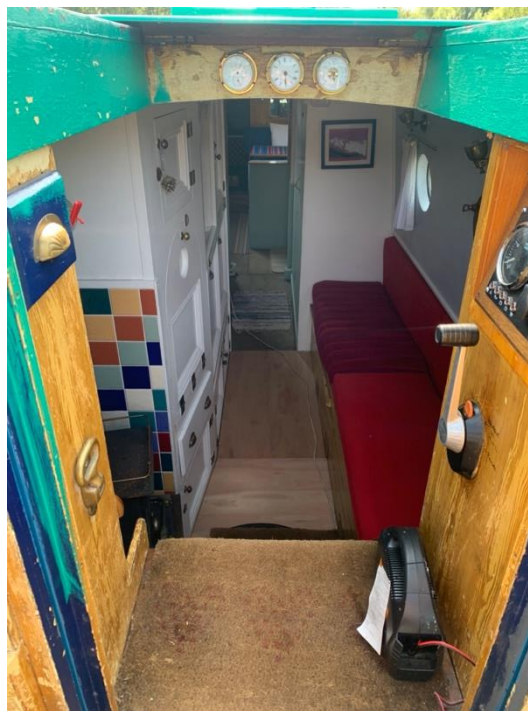
|                        |                              |
|------------------------|------------------------------|
| Type of Toilet         | Thetford                     |
| Shower/Bath            | Shower cubicle with wet room |
| Handbasin              | Yes                          |
| Additional Information | N/A                          |

## Kitchen Specification

|                    |   |
|--------------------|---|
| Cooker             | Nelson Tecma Grill, Oven + 2 burner hob |
| Fridge             | N/A                                     |
| Gas                | 1 x 12kg + 1 x 6kg Calor                |
| Additional Systems | N/A                                     |



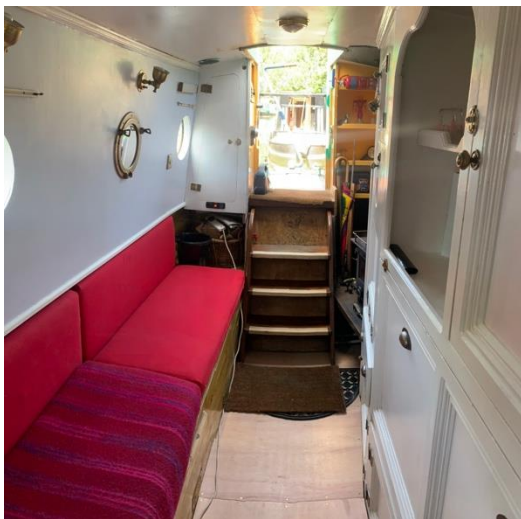
## Additional Photos



Clockwise from top left: Stern Seating, Engine control Panel, Stern deck to saloon



Nuthatch 40' Traditional Stern



Clockwise from top: Saloon from stern, Saloon to Stern, Multi fuel burner in saloon



FROUDS BRIDGE  
MARINA

Nuthatch 40' Traditional Stern



Clockwise from top: Galley from stern, Galley to Stern, Vanity Sink beyond Galley on starboard side



Top: Saloon/Bedroom from stern  
Bottom: Saloon/Bedroom to stern





Left: Bathroom cabinet

Right: Bathroom Shower and Thetford toilet unit

---

**NOTE:**

*In this transaction we are acting as Brokers only. We are informed that this sale is not related to the Owner's business, trade or profession. Whilst every care has been taken in their preparation, the correctness of these particulars is not guaranteed. The particulars are intended only as a guide and they do not constitute a term of any contract. A prospective buyer is strongly advised to check the particulars and where appropriate to have the vessel fully surveyed and inspected, water trialled and opened up".*

---