



FROUDS BRIDGE
M A R I N A

Becky

42ft Cruiser Stern

Built by John White - Fitout By L Woods

Price - £42,000



Becky is a John White built 42ft cruiser stern narrowboat, fitted out by L Wood's. She has been affectionately cherished for and maintained by her previous owners. The interior is spacious and airy with a practical layout that can accommodate up to six people for day cruising or four people for those nights exploring.



Boat Specification

Year of Construction	2007
Hull Plating Specification	10-6-4
Keel	Flat
No. Berths	2 + 2

History of Vessel / Maintenance

Boat Safety Certificate Expiry	
Latest Hull Blacking	2019

Description

Becky's interior is well thought out and spacious with beautiful wood panelling throughout. The bedroom at the back is cosy, and the bathroom in the mid-ships gives ease of use with multiple persons on board. Moving towards the front, the galley and saloon are ideal for entertaining. And not to forget the storage locker in the bow, keeping your gas bottles safe and secure. Overall, Becky is a good combination of practicality and style.

As you step onto the cruiser stern, with the engine compartment located below, this space offers a pleasant area to converse with the 'captain' while cruising. It's also an ideal spot to sit back and relax during warm summer days, taking in the beautiful surroundings.

Descending the steps through the stern doors, you arrive at a gracefully designed main bedroom that is well-proportioned, particularly for this hull length. The double bedroom is spacious and exudes an airy and bright ambience. The room boasts built-in storage, and there is extra storage space underneath the bed. Continuing down the corridor, you will come across the bathroom on your right-hand side. The well-proportioned bathroom benefits from a shower enclosure, a sink with a Vanity unit and a cassette toilet with a swivel space-saving seat.

As you make your way down the hall, you arrive at the galley alongside the saloon. The galley is designed to be both practical and functional, equipped with all the standard appliances you need, including a four burner hob, oven/grill, 12volt fridge, a spacious worktop, and sink/drainer.

Finally, moving from the galley, we have the saloon lined on the left by an attractive breakfast bar, complimented with under-worktop storage and stools. This makes for a nice compact dining area whilst providing storage space for those essential items and creature comforts. The saloon has a Helmsman solid fuel burner for those cold nights to keep the interior nice and warm.



FROUDS BRIDGE
MARINA

Engine Specification

Engine Make	Vetus Diesel m4.15
Engine Hours	Not Recorded
Bow Thruster	No
Diesel Tank Capacity	150 litres - Estimated

Water & Heating Systems

Source of Hot Water	Calorifier
Central Heating	Multi Stove and Back Boiler to Radiators
Hot Water	Calorifier
Water Tank Capacity	130 Gallons - Estimated
Water Tank Material	Stainless Steel
Additional Heating	Helmsman Solid Fuel Burner





Electrical System and Components

12-Volt System/Lighting	Standard lights
12-Volt System/Power	Standard
240 Volt	Shore power
Inverter	NIKKAI 1000W
Solar Panel	N/A
Batteries	Domestic and Starter batteries
Other Systems	NUMAX Battery Charger

Bathroom Specification

Type of Toilet	Cassette Toilet
Shower/Bath	Shower
Handbasin	Bowl with Vanity Unit

Kitchen Specification

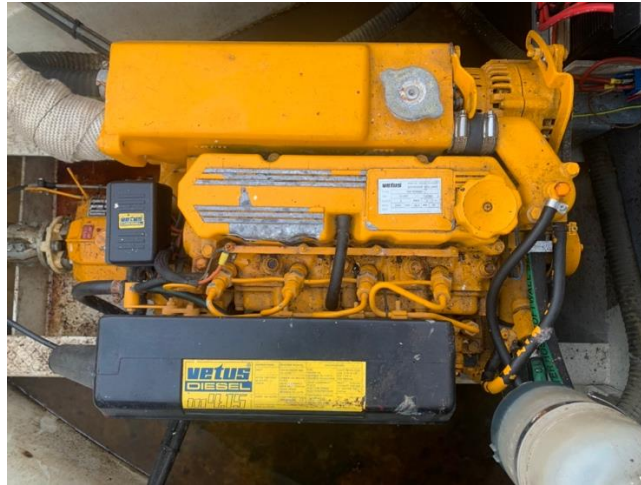
Cooker	Vanette GG 7000 Gas Oven/Grill
Hob	Vanette Gas Hob
Fridge	Lec 12/24v
Gas	Twin Calor 13kg
Additional Systems	Microwave Oven



FROUDS BRIDGE
MARINA

Becky – 42' Cruiser Stern





This sale is not related to the

Owner's business, trade or profession. Whilst every care has been taken in their preparation, the correctness of these particulars is not guaranteed. The particulars are intended only as a guide and do not constitute a contract term. A prospective buyer is strongly advised to check the particulars and, where appropriate, to have the vessel fully surveyed and inspected, water trialed and opened.