



FROUDS BRIDGE
MARINA

Nicotiana

35' Cruiser Stern

Colecraft

£32,000 ono



Nicotiana is a 35' cruiser stern built by Colecraft in the early 80's and still retains a lot of its original charm. Nicotiana sleeps 4 and has all the amenities required to enable a comfortable cruiser whether short or long.



Boat Specification

Year of Construction	1983
Hull Plating Specification	Steel
Keel	Flat
No. Berths	4

History of Vessel / Maintenance

Boat Safety Certificate	2024
Recent Survey	N/A
Latest Hull blacking	2018
Anodes	2018

Boat Description

Nicotiana has been well maintained all round by the current owners. The exterior of the boat is in good shape with the paint work up together. New Stern and cratch covers fitted 12 months ago. The rear deck boards have recently been fitted with plenty of life left in them. The engine bay is clean, tidy, and well organized.

The interior of the boat is all original and in great shape. The wood paneling has a dark stain with the cabin side fitted with horizontal T&G. The floor throughout is a light brown carpet.

Stepping into the cabin from the large stern deck you come straight into the bedroom with a fixed double bed on the port side. Under the bed is all storage. There is also a cupboard fitted to the aft bulk head wall.

Moving forward, before the shower room there is a full height storage cupboard with the shelving, providing loads of space for clothing or essential items.

The shower room has ample space and fitted with a large raised shower tray and curtain. Here there is a toilet and hand basin. Above the hand basin you will find the paloma LPG hot water boiler. The shower room itself has been decorated with a cream colour tiles.

Moving Forward once more we move into the galley. Here you will find a well thought out space. All the necessary equipment you would expect as well as some nice drop worktop to provide the space when food prep is required. On



Nicotiana 35' Cruiser Stern

the Port side you will find the stainless steel sink and under counter 12v fridge as well as the Freestanding double LPG oven. On the starboard side is a storage unit which also provides a little extra worktop space.

The Saloon is next and here there is a straight fitted sofa on the portside. This sofa doubles up to provide a further 2 berths and has some storage underneath. On the starboard side you will notice the fold up table stored in the gunwales followed by a corner TV/storage unit.

Finally opening the double bow doors is a cratch space that provides ample space to use for storage or as an evening seating area.

All in all Nicotiana is some in length but provides everything you need for an enjoyable cruise.

Engine Specification

Engine Make	Thornycroft
Engine Hours	987 (reported)
Bow Thruster	No
Diesel Tank Capacity	125 (estimated)
Additional Systems	

Water & Heating Systems

Source of Hot Water	Paloma LPG boiler
Central Heating	Alde
Solid Fuel Stove	No
Water Tank Capacity	400 litres (reported)
Water Tank Material	Integral

Electrical System and Components

12-Volt System/Lighting	Standard
12-Volt System/Power	Standard
240 Volt	Shorepower charging
Inverter	N/A
Solar Panel	N/A



FROUDS BRIDGE
MARINA

Nicotiana 35' Cruiser Stern

Batteries	3 domestic, 1 starter
Other systems	

Bathroom Specification

Type of Toilet	Pump Out
Shower/Bath	Shower cubicle with curtain
Handbasin	Yes
Additional Information	

Kitchen Specification

Cooker	Freestanding LPG double oven and 4 burner hob
Fridge	Dometic 12v
Gas	2 x 13kg Propane
Additional Systems	



FROUDS BRIDGE
MARINA

Nicotiana 35' Cruiser Stern

Additional Photos



▲ Saloon facing aft



▲ Galley facing aft



▲ Galley facing aft

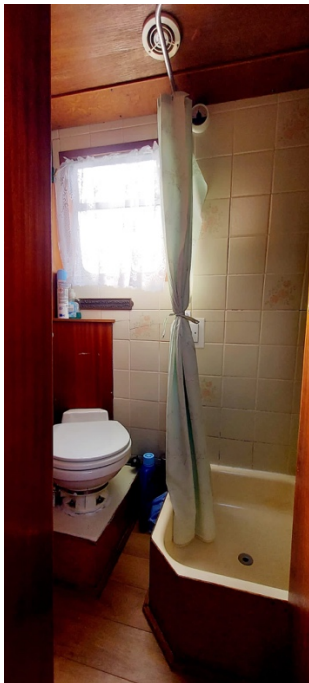


▲ Galley and Saloon facing fore



FROUDS BRIDGE
MARINA

Nicotiana 35' Cruiser Stern



▲ Shower room



▲ Shower room



▲ Bedroom facing Aft



▲ Bedroom facing fore



FROUDS BRIDGE
MARINA

Nicotiana 35' Cruiser Stern



▲ Shower room



Bedroom facing aft

NOTE:

In this transaction we are acting as Brokers only. We are informed that this sale is not related to the Owner's business, trade or profession. Whilst every care has been taken in their preparation, the correctness of these particulars is not guaranteed. The particulars are intended only as a guide and they do not constitute a term of any contract. A prospective buyer is strongly advised to check the particulars and where appropriate to have the vessel fully surveyed and inspected, water trialled and opened up".