



FROUDS BRIDGE
MARINA

BASIL II

60' Traditional Stern

£43,950ono



Basil II is a 60' Traditional stern built in the 90's which has been well maintained and cared for. Basil II has a well throughout, practical, light and airy cabin space with everything you need for continuous, extended or leisure cruising.



Boat Specification

Year of Construction	Circa 1990
Hull Plating Specification	Steel
Keel	Flat
No. Berths	2

History of Vessel / Maintenance

Boat Safety Certificate	2023
Recent Survey	Sept 2020
Latest Hull blacking	Sept 2020
Anodes	Sept 2020

Boat Description

On the outside Basil II is in good shape with the paint work in good condition with little sign of rust or bubbles. Inside Basil II has been finished in veneer ply on cabin sides, wooden flooring throughout and white UPVC style T&G ceiling. Basil II is dry and free from condensation.

Starting at the Bow to step into a recently fitted cratch area with a well made frame with covers in near new condition. The bow deck itself is large with 4 storage lockers ready for ropes, pins etc. The cratch frame window has a beautifully painted picture of a Kingfisher.

Opening up the double doors you step down into the saloon. The first thing you notice is the sense of space. The large windows and white coloured ceiling bring in loads of light and add to the sense of space. The saloon itself has a Morso squirrel stove on the port side and some shelving on the starboard. There is a large wall mounted flat screen TV and 2 comfortable chair from which to enjoy the space. Before moving into the galley kitchen there is a wooden chest of drawers.

The large U shaped Galley has been finished with white tiles with a vast laminate worktop. There is stainless steel sink and mixer tap as well as a under counter 12v shoreline fridge, built under Thetford Prima mk III LPG double oven and a 4 burner hob. There is a large amount of storage space in this galley with undercounter cupboards. On the starboard side Basil II has a large side hatch which adds to the character of this space. Here you will also find a fold away dining table.



Basil II – 60' Traditional Stern

Moving into the shower the main thing you notice is the size of this space. You don't often see a shower room of this size on a narrowboat, there is room to swing more than one cat. In this space you will find a large quadrant shower finished with shower paneling. There is also a Thetford cassette toilet and ceramic vanity unit. This shower room space also has a full sized washing machine and tumble dryer install to the 240v circuit sitting under the same laminate worktop as the galley. Above the worktop is another small storage cupboard.

The bedroom is served by portholes giving you privacy and the feel of a cosy space. The bed is a fixed double again with a large amount of storage underneath. At the end of the bedroom is a full height double door wardrobe which is plenty big enough for weeks worth of clothes.

The engine room is set out as you would expect a traditional stern to be, and with portholes giving you light, it has all the room you need.

Engine Specification

Engine Make	BMC 1.8
Engine Hours	Not recorded
Bow Thruster	No
Diesel Tank Capacity	Not Recorded (Estimated at 150ltr)
Additional Systems	N/A

Water & Heating Systems

Source of Hot Water	Morco boiler
Central Heating	Solid Fuel Stove & electric heaters
Solid Fuel Stove	Morso Squirrel
Water Tank Capacity	Not recorded
Water Tank Material	Integrated

Electrical System and Components

12-Volt System/Lighting	Standard
12-Volt System/Power	Standard
240 Volt	N/A
Inverter	1 x Sterling 1600 watt, 1 x 1000w



FROUDS BRIDGE
MARINA

Basil II – 60' Traditional Stern

Solar Panel	Yes (3 x 100w panels + mppt charger controller)
Batteries	3 domestic, 1 starter
Other systems	Victron battery charger, 1 x galvanic isolator

Bathroom Specification

Type of Toilet	Thetford Cassette
Shower/Bath	Large Quadrant shower
Handbasin	Ceramic vanity unit
Additional Systems	Beko washing machine, Beko tumble dryer (240v only)

Kitchen Specification

Cooker	Thetfor Prima Mk 3 built under double oven and Samsung 4 burner LPG hob
Fridge	Shoreline 12v
Gas	2 x 13kg
Additional Systems	1 x small 240v freezer



FROUDS BRIDGE
MARINA

Basil II – 60' Traditional Stern

Additional Photos



▲ Saloon facing aft



▲ Saloon facing fore with stove



▲ Galley facing aft



▲ Galley facing fore

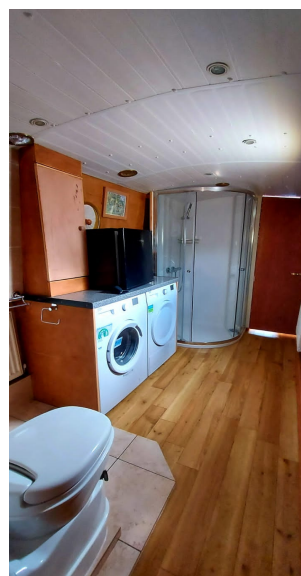


FROUDS BRIDGE
MARINA

Basil II – 60' Traditional Stern



▲ Shower room facing aft



▲ Shower room facing fore



▲ Bedroom facing aft



▲ Cratch frame

NOTE:

In this transaction we are acting as Brokers only. We are informed that this sale is not related to the Owner's business, trade or profession. Whilst every care has been taken in their preparation, the correctness of these particulars is not guaranteed. The particulars are intended only as a guide and they do not constitute a term of any contract. A prospective buyer is strongly advised to check the particulars and where appropriate to have the vessel fully surveyed and inspected, water trialled and opened up".
