



FROUDS BRIDGE
MARINA

BAJAN DREAM

50' Cruiser Stern

Liverpool Hull

£35,950ono



Bajan Dream is 50' cruiser stern Liverpool Hull built in 2006. This vessel has great space in part thanks to the 6'4 head room. Bajan Dream has all the necessary equipment and with a bit of finishing off would make a great liveaboard or practical leisure cruiser.



Boat Specification

Year of Construction	2006
Hull Plating Specification	10/6/5/4
Keel	Flat
No. Berths	4

History of Vessel / Maintenance

Boat Safety Certificate	2022
Recent Survey	2017 – report not available
Latest Hull blacking	May 2017
Anodes	May 2017

Boat Description

Bajan Dream is Liverpool Boat Co Hull with a large cruising deck. This boat has been fitted with an Isuzu 35hp Diesel engine and a Newage PRM 120 D2 gearbox. The bilge has recently been cleaned and painted.

The inside of Bajan Dream has been fitted with a bright interior made up of white paneling for walls and ceilings. The gunwales in the saloon have been finished with T&G and left with their natural colouring. The flooring currently consists of painted ply boards which adds to the light feel of the boat. There are some works required to finish off the fit out of this boat which includes the ceiling corners and cupboard in the back the back bedroom. Once this has been finished Bajan Dream it will only add to the vessels charm.

Stepping down through the offset stern door you come into the rear bedroom cabin. Here you will find on aft wall of the controlling equipment such as 3kw inverter/charger, mppt solar charge controller, switching gear etc. The bed space is consists of a very neat fold down bed mechanism, giving this space flexibility, yet also a nice cosy space to rest your head.

Moving forward you come to a jack and jill shower room. On the portside is a full side quadrant shower finished with black quartz effect shower panels. This room also consists of a composting toilet and a yet to be fitted large round ceramic handbasin.

Moving forward again you come into the Galley which has been fitted with all the necessary kitchen equipment. On the portside you have a freestanding LPG double oven and 4 burner hob, a large Belfast ceramic sink and a stylish



Bajan Dream 50' Cruiser Stern

chrome mixer tap and also a black 12v Swan fridge. On the starboard side there is a large amount of storage space including a wall mounted cupboard. The galley worktop on both sides has been fitted with a very nice oak worktop.

Finally moving to the spacious saloon you will find a large 3-4 person sofa which converts down to another 2 berth. There is a wall mounted TV and a floor to ceiling corner bookcase on the port side. On the starboard side there is nice multifuel wood burner that has been fitted with a beautiful cooper surround.

Engine Specification

Engine Make	Isuzu 35
Engine Hours	Not recorded
Bow Thruster	No
Diesel Tank Capacity	Not Recorded (Estimated at 150ltr)
Additional Systems	Newage PRM 120 D2 gearbox.

Water & Heating Systems

Source of Hot Water	Calorifier
Central Heating	N/A
Solid Fuel Stove	Yes
Water Tank Capacity	Not recorded
Water Tank Material	Integrated

Electrical System and Components

12-Volt System/Lighting	Standard
12-Volt System/Power	Standard
240 Volt	Shore Power
Inverter	3kW
Solar Panel	Yes + Mppt charge controller
Batteries	3 domestic, 1 starter
Other systems	

Bathroom Specification

Type of Toilet	Compost
Shower/Bath	Yes – Quadrant shower
Handbasin	Yes – not fitted
Additional Systems	N/A

Kitchen Specification

Cooker	Freestanding LPG double oven + 4 burner hob
Fridge	12v
Gas	2 x 13kg
Additional Systems	Microwave

Additional Photos



▲ Saloon facing fore



▲ Saloon facing fore with stove



▲ Galley facing fore



▲ Galley facing aft

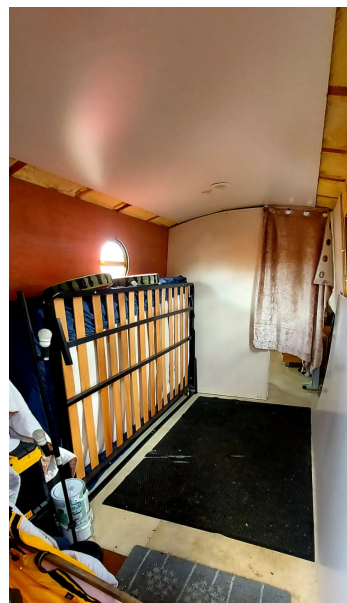


FROUDS BRIDGE
MARINA

Bajan Dream 50' Cruiser Stern



▲ Showerroom facing fore



▲ Bedroom facing fore



▲ Engine bay



▲ Bajan Dream Port side

NOTE:

In this transaction we are acting as Brokers only. We are informed that this sale is not related to the Owner's business, trade or profession. Whilst every care has been taken in their preparation, the correctness of these particulars is not guaranteed. The particulars are intended only as a guide and they do not constitute a term of any contract. A prospective buyer is strongly advised to check the particulars and where appropriate to have the vessel fully surveyed and inspected, water trialled and opened up".
