



FROUDS BRIDGE
M A R I N A

DARSTUR

40' Traditional Stern

CRT Index Number - 49443

£33,950ono



Darstur is a 1991 40' Traditional Stern narrowboat built and fitted by M&N Narrowboats. Darstur is a well cared for vessel with fresh paint work, well maintained engine and with a comfortable relaxing interior it is ideal for cruising holidays or extended trips.



Boat Specification

Year of Construction	1991
Hull Plating Specification	Steel
Keel	Flat
No. Berths	2

History of Vessel / Maintenance

Boat Safety Certificate	June 2021
Recent Survey	2016
Latest Hull blacking	July 2016
Anodes	July 2016

Boat Layout Description

Darstur is a sweet boat that has been very well looked after by the current owner. It has a traditional yet practical layout and feel. Darstur was repainted in 2017 with the paint work still lovely, bright and fresh. The interior of the boat is in good condition with oak paneling throughout the boat.

The bow deck is a good size with lockers port and starboard which also provide seating for 2. The cratch frame and cover are in good shape and provide a solid cover from the elements. The cratch frame has a neat drop-down table ready for your evening meals in the sunshine. Before entering into the saloon there is a set of double stable doors.

Saloon - The saloon is a spacious area with a comfortable sofa on the port side and a single cushioned seat on the starboard. Also, on the starboard side you will find the glass fronted cabinet currently used for mugs and glasses. Here you will find the Morso squirrel and a storage cupboard/TV unit.

Galley - The galley is a good practical size with storage below the worksurface and cupboard space above head. In the galley there is a full sized freestanding Vanette double oven and 4 burner hob and a Dometic 2-way fridge (12v and LPG).

Shower Room - The shower room is a good size. Here you will find the shower cubicle with curtain and the sink unit. The sink unit tap double as a retractable shower head. The toilet is a Sealand pump out toilet

Bedroom - The bedroom has a 4ft double bed with storage below alongside the waste tank. Above the head end is a single storage unit with reading lights underneath. At the feet there is a double storage unit and a full height wardrobe. This bedroom space whilst compact has loads of storage without impeding your comfort



Engine Specification

Engine Make	Kubota Nanni 4 Cylinder
Engine Hours	6400 approx
Bow Thruster	No
Diesel Tank Capacity	200L approx
Additional Systems	Hospital Silencer

Water & Heating Systems

Source of Hot Water	Calorifier
Central Heating	Solid Fuel Stove
Solid Fuel Stove	Yes
Water Tank Capacity	650l approx
Water Tank Material	Integrated

Electrical System and Components

12-Volt System/Lighting	Standard
12-Volt System/Power	Standard
240 Volt	Shoreline
Inverter	Pro Sine 1000w
Solar Panel	No
Batteries	3 domestic, 1 starter
Other systems	Battery Charger

Bathroom Specification

Type of Toilet	Pump Out
Shower/Bath	Shower
Handbasin	Yes
Additional Systems	Shaving Socket



Kitchen Specification

Cooker	Valor Vannette
Fridge	Dometic 2 way 12v/LPG
Gas	2 x 13kg
Additional Systems	Spare 12v fridge

Additional Photos



▲ Saloon facing fore



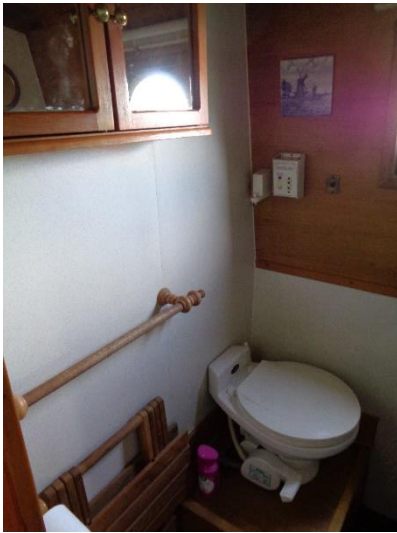
▲ Galley facing fore



▲ Galley facing aft



▲ Shower room



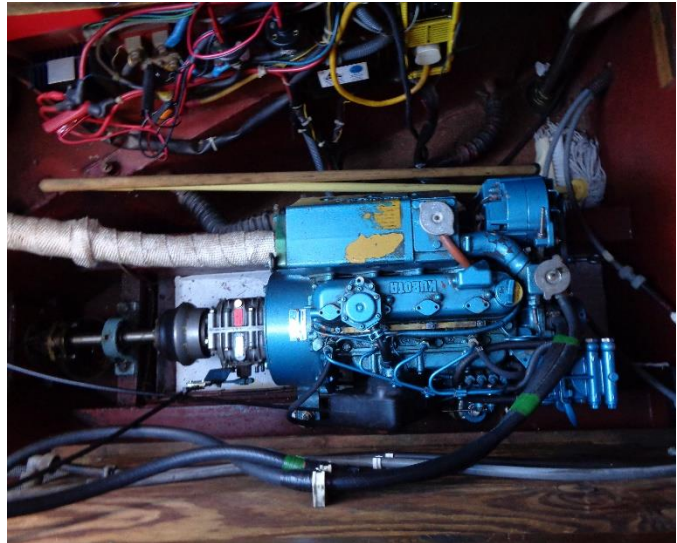
▲ Sealand Toilet



▲ Bedroom facing fore



▲ Bedroom facing aft



▲ Kubota 4 Cylinder



DARSTUR - 40' Trad



▲ External



▲ Darstur Signwriting

NOTE:

This is sales information, and not a survey report. The details in this brochure are based on superficial inspection; and on information provided to Frouds Bridge Marina via the owner. They are intended for you to decide whether to investigate the boat further. The information here is given in good faith but no description, statement, promise of work to be done, or suggestion for future use, constitutes an offer.