



FROUDS BRIDGE
M A R I N A

Phoenix

2017 50' Cruiser Stern

CRT Index - TBC

£64,950 ono



Phoenix is a 2017 50' Cruiser stern with the hull made by Bridgeman boatbuilders and fitted out at Lymm Marina.

Phoenix has a lovely well throughout reverse layout design including a modern kitchen, a cozy saloon, large shower room and big full width double bed. This boat will feel like a home away from home.



Boat Specification

Hull Plating Specification	10/6/4mm
Keel	Flat
No. Berths	4 (fixed double + sofa bed)
Seating	Sofa Bed
Flooring/Layout	Reverse layout

History of Vessel / Maintenance

Boat Safety Certificate	5 th Feb 2023
Recent Survey	N/A
Latest Hull blacking	July 2019
Anodes	July 2019

Boat Layout Description

Externally - Phoenix was painted and sign written in 2018 and the paint is still in very good order with only minor blemishes around the areas you would normally expect. The cruising deck is in good order with a checker plate engine cover. The engine bay itself is clean from grease and oil with no water present at the time of writing.

General Internal - Internally the boat has been lined with a combination of painted wood and light ash veneer ply and trimmed with solid ash finished with a clear varnish. The flooring is finished with solid wood fitted traverse. The interior has been well maintained and still has that sense of being new.

Galley - Stepping down into the galley from the stern deck you enter a space that is light and airy. Port and starboard are 2 storage spaces on consisting the switch gear, galvanic isolator and inverter the other a great space for you cruising paraphernalia. The steps are made of solid wood and can be easily removed for easy access. The galley itself has a solid wood worktop with a built-in butler style ceramic sink and mixer tap, 240v washing machine and a large storage cupboard on the port side. On the starboard is the built in 240v fridge, Thetford cooker and inlaid Thetford 2 ring hob making great use of the space. There is plenty of storage considering the size and what the galley has to offer.

Saloon - The saloon is nice and cozy with a swivel chair and double sofa bed. This space has an radiator fed from the diesel heater a 240v electric heater and a 5kw multi fuel stove meaning you will never be cold on this boat. The decoration is a good order and gives a very homely feel.



Shower room - The walkthrough shower room (starboard to port) utilizes the full width of the boat allow for a generous quadrant style shower cubicle finished with mutlipanel giving a low maintenance option. On the Port side is the Thetford C220 series swivel seat cassette toilet and space saving rectangular ceramic sink with built under storage.

Bedroom - From the shower room you move into the bedroom which has a huge fixed raised double bed that spans the full width of the boat. This room has been finished with white painted wood and with the portholes allows loads of light in yet gives you that extra bit of privacy. There is a radiator fed by the diesel heater. In the bedroom is a large double sized wardrobe and under the bed is shelved storage giving you room to keep things away until you need them. The bedroom has access to the outside via a set of double doors exiting out onto the bow where you will find a large storage locker.

Engine Specification

Engine Make	Canal Line 38Hp
Engine Hours	135
No of Cylinders	4
Gearbox Make/Type	PRM 150
Bow Thruster	No
Diesel Tank Capacity	Approx. 150 litres
Propeller	17"

Water & Heating Systems

Source of Hot Water	Calorifier, Webasto diesel heater, immersion
Central Heating	Webasto diesel heater,
Solid Fuel Stove	Ecosy 5kw Ottawa Multi-Fuel Stove
Water Tank Capacity	Approx. 315 litres
Water Tank Material	Stainless steel
Additional Systems	



Electrical System and Components

12-Volt System/Lighting	Standard
12-Volt System/Power	Standard
240 Volt	Shorepower
Inverter	Victron 3kw
Solar Panel	No
Batteries	4 x domestic 1 x starter
Galvanic Isolator	Yes
Travel Pack	No

Bathroom Specification

Type of Toilet	Thetford Cassette C220 series
Shower/Bath	Yes - Quadrant
Handbasin	Yes
Additional Systems	Sink unit

Kitchen Specification

Cooker	Thetford Duplex 700 series oven/grill + Thetford 900 series hob
Fridge	Currys Built In 240v
Gas	2 x 13kg gas bottles in stern locker
Additional Systems	Beko 240v washing machine



FROUDS BRIDGE
MARINA

Phoenix - 50' Cruiser Stern

Additional Photos



▲ Galley facing fore



▲ Galley



▲ 240v Washing Machine



▲ Galley facing aft



Phoenix - 50' Cruiser Stern



▲ Saloon facing fore



▲ Saloon facing aft



▲ Saloon facing aft



▲ Multi-fuel stove



Phoenix - 50' Cruiser Stern



▲ Shower room



▲ Shower room



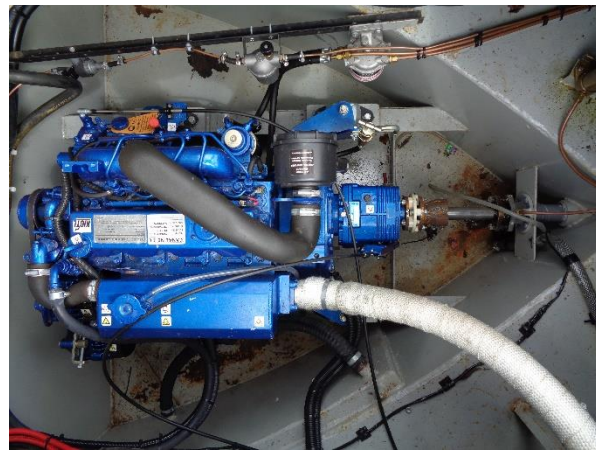
▲ Bedroom facing fore



▲ Bedroom facing aft



▲ Switch Board



▲ Engine Bay

NOTE:

This is sales information, and not a survey report. The details in this brochure are based on superficial inspection; and on information provided to Frouds Bridge Marina via the owner. They are intended for you to decide whether to investigate the boat further. The information here is given in good faith but no description, statement, promise of work to be done, or suggestion for future use, constitutes an offer.