



FROUDS BRIDGE
MARINA

Vivere

48' Traditional Stern

CRT Index - 517842

£29,950 ono



Vivere is a lovely little 48' Traditional Stern reported to of been built in 1995. This boat is very clean and tidy, well maintained and spacious with contemporary feel to the interior cabin space. Vivere is fitted with BUKH diesel engine which gives plenty of power with a beautiful cruising sound.



Boat Specification

Hull Plating Specification	10/6/6mm
Keel	Flat
No. Berths	4
Seating	Built in L-Shaped sofa
Flooring/Layout	Saloon at Bow

History of Vessel / Maintenance

Boat Safety Certificate	2024
Recent Survey	Dec 2014
Latest Hull blacking	Dec 2014
Anodes	Dec 2014

Boat Layout Description

Externally - Vivere's paint work is in a good state and intact with no significant rust patches. The canopies are made by Kinver Canopies and in a sound condition. There is 2 x 13kg gas locker at the front with plenty of storage on the bow deck.

General Internal - The cabins are well maintained and fitted with a grey coloured composite cladding. The curtains and cushions are clean and in good order.

Engine Room- At the stern Vivere is powered by a BUKH DV36RME diesel engine and fitted by Marcus Marine Engineering which included the new starter motor. The bilge is very clean and tidy with no signs of major oil issues. The room itself is compact but with clever removable engine surrounds maintenance is a breeze. Here you will find the battery charger, Victron battery monitor and all control switches.

Bedroom - Stepping down into the large spacious bedroom you will find a double bed with storage below in the form of drawers. Underneath the bed you will also find the calorifier and the pump out tank. There is also a small 12v TV mounted on the aft wall.

Bathroom - The bathroom space has been very well thought out. Here you will find the bath a corner sink unit and heated towel rail. The bathroom has been tiled with black ceramic tiles including a decorative ledge on the starboard side. The outer wall of the bathroom is full length frosted glass giving privacy whilst allowing the light to flood in.



Galley – The galley is a diagonal shape running from Port to Starboard allowing a large amount of storage cupboards and full sized appliances, such as the free standing stainless steel LPG cooker and 4 burner hob. There is also 12v shoreline fridge with small ice box. The worktop is a black composite material providing a robust and strong work surface. There are also a number of cupboards at head height including the glass cabinet that separates the galley and saloon.

Saloon – The saloon provides a large L-Shape sofa big enough for 6 to sit comfortably. The sofa can be used as a dining table then at the end of the evening converts into a comfortable 2 berth bed. Underneath there is more storage. Towards the bow on the port side there is a very clean Multi Fuel Stove. On the Starboard side there is a built in cupboard unit. There is also a set of wrought iron stairs leading to the decent sized bow deck.

Engine Specification

Engine Make	BUKH DV36RME
Engine Hours	Not reported
No of Cylinders	4 cylinders
Gearbox Make/Type	PRM 150
Bow Thruster	No
Diesel Tank Capacity	Not reported estimated at 150 litres
Propeller	17"

Water & Heating Systems

Source of Hot Water	Diesel Heater and Calorifier
Central Heating	Diesel Heater
Solid Fuel Stove	Solid fuel stove
Water Tank Capacity	Not reported – estimated at 400 ltrs
Water Tank Material	Poly tank
Additional Systems	Non reported

Electrical System and Components

12-Volt System/Lighting	Standard
12-Volt System/Power	Standard
240 Volt	Shorepower
Inverter	TBC
Solar Panel	Non fitted
Batteries	3 x domestic 1 x starter
Galvanic Isolator	Not reported

Bathroom Specification

Type of Toilet	Pump Out
Shower/Bath	Yes - Acrylic
Handbasin	Yes
Additional Systems	Sink unit

Kitchen Specification

Cooker	Stainless steel free standing cooker and 4 burner hob
Fridge	Shoreline 12v (inc ice box)
Gas	2 x 13kg gas bottles in front locker
Additional Systems	None

Additional Photos



▲ BUKH Diesel Engine



▲ Bedroom facing aft



▲ Bedroom facing Fore



▲ Bathroom

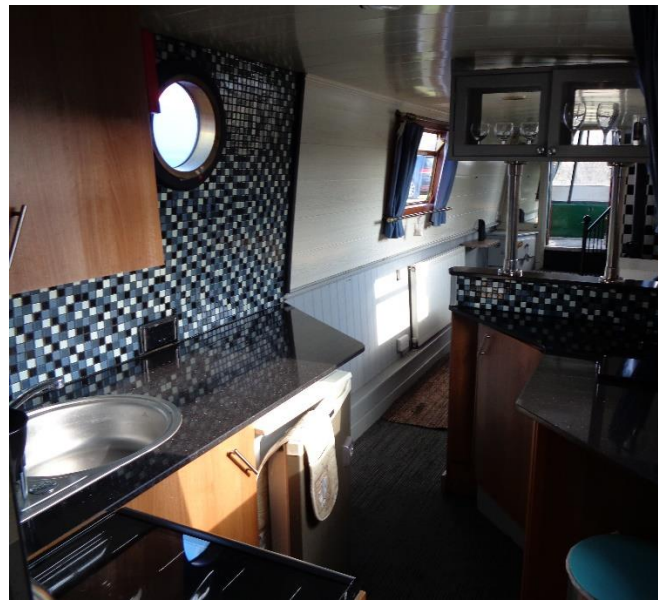


FROUDS BRIDGE
MARINA

Vivere - 48' Traditional Stern



▲ Bathroom corridor



▲ Galley



▲ Galley to Saloon



▲ Saloon facing fore

NOTE:

This is sales information, and not a survey report. The details in this brochure are based on superficial inspection; and on information provided to Frouds Bridge Marina via the owner. They are intended for you to decide whether to investigate the boat further. The information here is given in good faith but no description, statement, promise of work to be done, or suggestion for future use, constitutes an offer.