



Ying Tong
58' Cruiser Stern
Pro-Build
£61,950 ono



Ying Tong is a 2006 58' Pro-Build cruiser stern narrowboat which was recently repainted in 2018.

Ying Tong is a well thought-out boat with a lovely flow from the spacious bedroom to the walk through shower room, large galley kitchen and finishing in a spacious saloon. The fit out is of a high quality, with light oak veneer ply walls and Medium Oak laminate flooring throughout.

Ying Tong is of a high spec throughout and ready as either a great holiday boat or perfect for the continuous cruisers.



Boat Specification:

Boat Length	58'
Beam	6'10"
Draft	2'4"
Year of Construction	2006
Steel Thickness	10/6/5/4 mm
Keel	Flat

Boat Layout Description

Ying Tong has a large cruiser deck with well maintained engine covers. Under these covers you will find the hydraulic drive system that connects to the engine situated under the bed. This gives you large storage lockers which are ideal for the all the cruising equipment. Here you will also find your 6 leisure batteries and 1 starter battery.

Ying Tong is heated

Moving into the boat from the stern you step down into the bedroom. Here on the port side you will find the control panel & fuse boards. Underneath this you will see the Victron 3Kw inverter and the Sterling battery charger. Also included is the Dometic 3.5Kw generator travel pack perfect for running any appliances such as the a washing machine.

The bedroom itself is well spaced with portholes on either side. There is a full sized cupboard alongside 2 smaller drawer units. The bed itself is a 4' mattress of great quality. Under the bed you will find the ISUZU 43hp engine. There is plenty of room around this space to allow for ease of maintenance. Having the engine in this space gives the advantage of a nice quiet cruising experience whilst out on the cut.

The shower room is a large walk through space walking from starboard to port. Here you will find the large shower cubicle finished with a multipanel low maintenance finish. The shower is drained via Whale Gulper pump. There is a good sized vanity unit and hand basin as well as a pump out toilet. The shower room can be closed from either by 2 solid oak doors.

The galley is long and functional with practical laminate worktops, solid cupboard units, stainless steel sink with mixer tap and separate water filter for drinking straight from you tank. The kitchen is light and bright thanks to the number of large windows and 2 side hatches. The Thetford free standing Capri cooker is newly installed and also included is a Waeco Coolmatic fridge and a separate 3 compartment freezer.

Moving into the saloon there is a recently installed Clarke stove with grey metro tile backing and slate base. The saloon also benefits from loose furniture and two storage cupboard both port and starboard.



From the saloon to the bow deck there are 2 glazed solid wood doors. In the bow deck you will find a well-kept deck and 2 large storage lockers. The bow deck is covered by a cratch cover.

Engine Specification

Engine Make	ISUZU 43hp
Engine Hours	Not reported
Bow thruster	Hydraulic Bow thruster
Diesel Tank Capacity	Not reported

Water & Heating Systems

Source of hot water	Webasto, Calorifier, immersion
Source of heating	Webasto, Multi fuel stove
Water tank Capacity	120 gallons (reported)
Water tank material	Not Recorded

Electrical System and Components

12 volt system / lighting	Yes
12 volt system / power	Yes
240 volt	Shoreline, 3kw invertor, Sterling battery charger
Generator	3.5kw travel pack fitted to engine
Solar Panel	None
Batteries	1 x starter 6 x domestic

Bathroom Specification

Type of toilet	Pump Out
WC Holding tank capacity	80 Gallons (reported)
Shower	Full size
Handbasin	Ceramic sink
Additional Systems	Extractor fan

Kitchen Specification

Cooker	Thetford Capri 4 burner hob and double oven
Fridge	Waeco Fridge and Freezer
Gas	2 x 13Kg Propane
Additional systems	Water filter tap



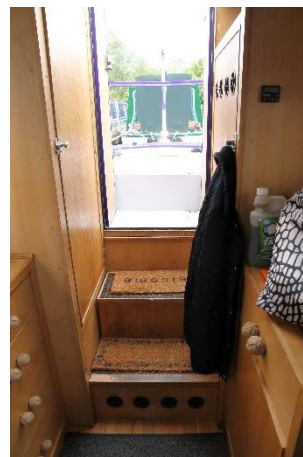
History of vessel / Maintenance

Boat Safety Certificate	
Recent Survey	N/A
Latest Hull blacking	
Anodes	

Additional Photos



Rear Cabin



Rear Cabin



Rear Cabin



Bathroom



FROUDS BRIDGE
MARINA



Bathroom



Bathroom



Galley



Galley



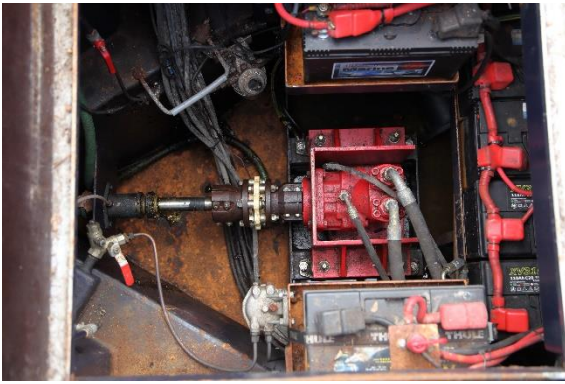
Saloon



Saloon



FROUDS BRIDGE
M A R I N A



Hydraulic drive



NOTE:

This is sales information, and not a survey report. The details in this brochure are based on superficial inspection; and on information provided to Frouds Bridge Marina via the owner. They are intended for you to decide whether to investigate the boat further. The information here is given in good faith but no description, statement, promise of work to be done, or suggestion for future use, constitutes an offer.